

IT'S FAIR TIME!



On the Road Again

JOIN US

AUGUST 12-15

LOS ALAMOS

where discoveries are made

County Fair & Rodeo

GRAND MARSHAL

Beverley Simpson



Beverley is the Emergency Manager for Los Alamos County where she organizes and directs operations of the Emergency Services Bureau and Consolidated Dispatch Center (CDC). Emergency Services (OEM) protects Los Alamos County through regional and local partnerships by coordinating information and resources during a disaster; supporting first responders; writing emergency plans; training public safety agencies; holding exercises on disaster response and recovery; maintaining public warning systems; managing Federal grant funds; assisting in disaster declarations and educating and preparing our community for disasters.

This past year and a half, Beverley has been responding to the COVID-19 pandemic in Los Alamos County. The State initiated emergency operations in January of 2020 and Beverley sent out the first situation report for Los Alamos County on Feb 6, 2020, which officially began COVID-19 response planning for the County. Part of that planning was a Point of Distribution Plan, developed and approved by Council in preparation for mass vaccination clinics which began on Dec 19, 2020. In total, 28 vaccination clinics were held, 14,192 vaccines were administered, and Los Alamos County has remained in the lead for fully vaccinated residents in the State.

Los Alamos County is currently at 90% of eligible residents having received their first dose and 84.6% of eligible residents fully vaccinated...



Beverley has over 26 years combined Emergency Response and Homeland Security/Defense, WMD, Public Health, with specialized training in Emergency Response, Public Health Emergencies, Chemical, Biological and Radiological Weapons of Mass Destruction. She is also a Colonel in the New Mexico Air National Guard assigned to Joint Force Headquarters as the A5 Director, Plans and Programs where she develops, coordinates, and promulgates National Guard strategy, policy and plans for the war fight and homeland in support of the Department of Defense, Chief National Guard Bureau, Adjutant General of New Mexico and the Governor.



County Fair & Rodeo

QUEENS COURT



Janey Michel

2021 County Fair & Rodeo Queen

Janey Michel is the 3rd generation cowgirl of James and Kellie Michel. When Janey isn't in the saddle, she enjoys anything outdoors and adventurous. This upcoming fall, she will be attending Los Alamos High School as a senior and cheering on the Hilltoppers as a Varsity Cheerleader. She would love to attend Texas A&M for Agriculture and hopes to further her rodeo knowledge. She looks forward to representing Los Alamos County this year and as she runs for New Mexico State Fair Queen in September. Janey would like to give huge thank you to her parents, Shelby, and all her mentors and support - especially Charlie Thorne, Linda Nuttall, & Cindy Manzanares, "I couldn't have done all this without the three of you, from the bottom of my heart thank you."



Aspen Jaramillo

2021 County Fair & Rodeo Princess

Aspen Jaramillo is 15 years old, and will be attending Los Alamos High School as a sophomore this fall. In her free time she enjoys hunting, fishing, and pretty much anything that gets her outside. She also enjoys competing on the LAHS Girls Basketball team. In the future, Aspen plans to join the military to fight for her country and everything she believes and cherishes. She also hopes to own and operate a ranch someday, as well as continue her rodeo dreams in barrel racing and bull riding. Aspen hopes to prove that with faith and hard work you can accomplish anything, and wants to show people it's ok to not fit in, because the Lord made every one of us to stand out. She would like to give all glory to God and thank her parents for standing behind her no matter what.



Jewel Jaramillo

2021 County Fair & Rodeo Sweetheart

Jewel Jaramillo is 12 years old and entering Los Alamos Middle School this fall. In her free time she enjoys jumping on her trampoline, riding horses, practicing contortion, and hanging out with family and friends. She is really looking forward to representing Los Alamos County in the Fair & Rodeo, along with Aspen Jaramillo and Janey Michel. She is looking forward to seeing everyone at the events, and looks forward to representing the town she has grown up in. She would like to thank her mom and dad for supporting her in everything.

County Fair & Rodeo

SCHEDULE OF EVENTS

Thursday, August 12

County Fair Exhibits Check-in
Mesa Public Library 2-6pm

Friday, August 13

County Fair Exhibits
Mesa Public Library
Viewing for Handicapped 4-5pm
General Public 5-8pm

Friday Night Summer Concert Series
Katy P and The Business
Ashley Pond Park 6-10pm

Saturday, August 14

Festival & Fair
Ashley Pond Park 9am-3pm

Summer Arts & Crafts Fair
Fuller Lodge East Lawn 9am-4pm

County Fair Parade
Central Avenue 10am

County Fair Exhibits
Mesa Public Library 10am-3pm

Los Alamos Skate Jam
Mesa Public Library Skate Park 1-4pm

County Rodeo
Including a watermelon eating contest!
Meet the Rodeo Royalty
Brewer Arena 2-5pm

Cowboy Dinner | Dance
Los Alamos Sheriff's Posse Lodge 5pm | 7pm

Sunday, August 15

Stroll the Stables
North Mesa Stables 9am-12pm

County Rodeo: Tough Enough to Wear Pink
Including a watermelon eating contest!
Meet the Rodeo Royalty
Brewer Arena 1-5pm

RODEO ADMISSION PRICES:

2 & under - FREE
Youth (3-17) & Seniors (60+) - \$5
Adults (18-59) - \$8
Family of 4 - \$25

VENDORS: Interested vendors must complete and return a vendor permit form to Recreation by Wed., August 11, 2021.



County Fair & Rodeo



PARADE

LOS ALAMOS
MAIN STREET

Saturday, August 14th at 10:00am

To register, visit LosAlamosMainStreet.com/fair-and-rodeo

For more information, call 505.661.4844, or email: mainstreet@losalamos.org

The 2021 Parade will head west on Central Avenue and continue its regular route through downtown Los Alamos. All streets and parking lots along the parade route will be closed and staffed by volunteers. The parade will end at Oppenheimer Drive where parade participants can continue in the westbound lane and use Rose Street or Canyon Road to return to the parade starting point, drop off parade participants, continue on home, or return to downtown.



Join us! This year's theme is

★ On the Road Again

County OPEN RODEO

Brewer Arena: Sat. 2:00-5:00pm & Sun. 1:00-5:00pm

Presented by Los Alamos County and TA Rodeo, LLC/Arlin & Tammy Lepp

Bronc Riding/Ranch Bronc	\$80
Breakaway Roping Boys & Girls <i>(14/under for boys)</i>	\$40
Mutton Bustin <i>(6/under)</i>	\$10
Junior World Finals Bull Riding <i>(ages 10-18)</i>	\$75
Boot Race <i>(6/under & 12/under)</i>	FREE
8/under Barrels	\$10
15/under Barrels	\$30
Open Barrels	\$60
Rescue Race <i>(Per Team)</i>	\$30
Novice Bull Riding	\$75
Calf Scramble <i>(12/under)</i>	FREE
Draw Pot Team Roping	\$75/roper
Ribbon Roping <i>(Per Team)</i>	\$40
Sheep Chase <i>(6/under)</i>	FREE
Chute Doggin'	\$40
Open Bull Riding	\$80
Open Team Roping	\$100/team

Enter Each Day - Pay Off Each Day - CASH ONLY

Buckles awarded in some events

2-Day Draw Pot Team Roping high money winner

Call-in Entries

Monday, August 9th, 6:00-9:00pm • 719.580.3022

\$10 per person admin fee waived for call-in entries.

All event participants must sign a liability waiver.

All participants must pay the gate admission (see page 4).

Saturday entries close at 1:30pm sharp.

Sunday entries close at 12:30pm sharp.



COWBOY DINNER AND DANCE

Los Alamos County Sheriff's Posse Lodge
650 North Road, Los Alamos

Dinner 5:00-7:00pm

Prime Rib, Salmon, and Brats by Steve Wallin's BBQ
PLUS, Cowboy Beans, Coleslaw, Bread and Dessert

Adult Dinner Entry \$20 Children 10 & Under \$5
Pay at the Door!

FREE Dance 7:00-9:00pm
LIVE music by Austin Van Acoustic!



County Rodeo Participant & Spectator PARKING

The County's goal is to limit traffic through the North Mesa Stables for the safety of our North Mesa Stable Lot users and their animals.

Participant Gate / Entrance:

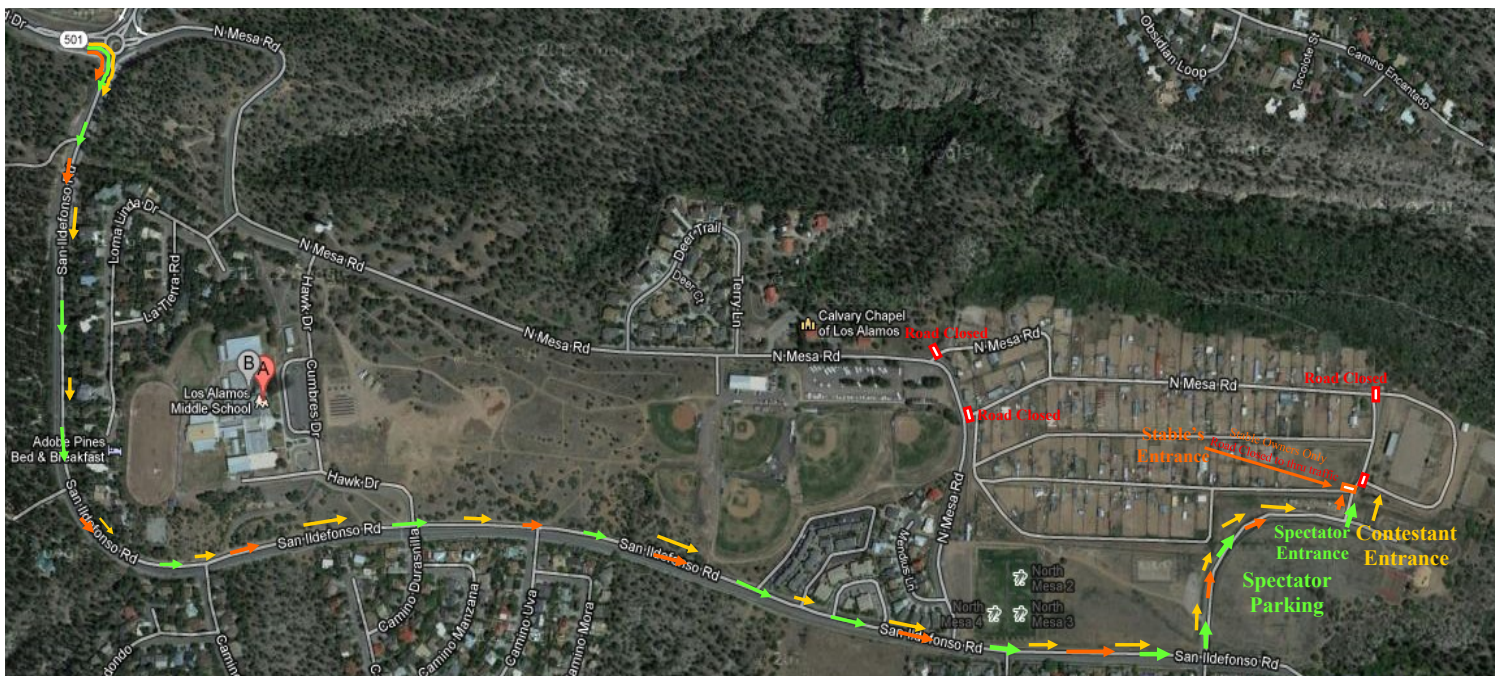
San Ildefonso Road to the South Entrance to Brewer Arena
Parking is outside of the Stables

Spectator Parking / Entrance:

San Ildefonso Road to the South Entrance to Brewer Arena
Parking is outside of the Stables

Stable Entrance:

San Ildefonso Road to the South Entrance to Stable Area
Enter through the yellow gates





County Fair

EXHIBITS AND

ARTS AND CRAFTS FAIR

County Fair Exhibits

Register by August 11

Exhibit books available at both libraries and the
Los Alamos Cooperative Extension Office
Address: 475 20th Street Phone: 505-662-2656

Exhibit Categories:

- | | |
|-----------------|------------------|
| Clothing | Knitting |
| Crochet | Needlework |
| Quilts | Baked Goods |
| Preserved Foods | Hobbies & Crafts |
| Fine Arts | Photography |
| Horticulture | 4-H Projects |

Two Age Categories: YOUTH & ADULT

To register online, visit
losalamoextension.nmsu.edu

Pre-Registration Deadline August 11, 2021

Fuller Lodge Art Center's Annual

Summer Arts & Crafts Fair

Saturday, August 14

The Arts & Crafts Fair begins immediately after the Fair & Rodeo Parade. Crowds stroll the east lawn at Fuller Lodge to shop for souvenirs, birthdays, weddings, special occasions, family, and of course, for themselves, finding treasures that can only be discovered once a year, at the Summer Fair.

9:00am-4:00pm, Fuller Lodge East Lawn

Shoppers will find a large variety of handmade arts and crafts, with nearly 100 participating artisans. Vendors will be selling everything from jewelry to furnishings, pottery to sculpture, wall art to wind chimes, and, of course, food!

To get a sneak peek, visit
fullerlodgeartcenter.com

DISCOVERY ZONE

Los Alamos is a place that celebrates
curiosity and creativity in science!

where
discoveries
are made



Visit with your COUNTY COUNCILORS

Look for the big tent at Ashley Pond Park
Saturday, August 14

Stop by to say "hello" at the County Fair, enjoy cookies & lemonade, and talk to your County Councilors while you check out the project displays.

Check out our online
image gallery!

LOSALAMOSCOUNTY
IMAGES.SMUGMUG.COM



"Like" us on
Facebook at

LOS ALAMOS
COUNTY



"Follow" us on
Instagram

@LOSALAMOSCOUNTY

Los Alamos North Mesa Stable Owners Host

STROLL THE STABLES



Sunday, August 15th

North Mesa Stables:
Sun. 9:00am - 12:00pm

For more information, email Melissa at lemonadelivingla@gmail.com or Wendy at wburke_ryan@hotmail.com

Join us as we take you *On The Road Again!*

Come explore the stables and visit the residents there! Experience this popular event with the whole family. Get up close and personal with **horses, llamas, goats, a miniature donkey, chickens and turkeys**. Kids will receive **Stroll the Stable Passports** provided by Lemonade Living at the Lujan Homestead Cabin to document their journey and earn stamps. Enjoy **pony painting** and learn about everything western. Make sure to get your **wild west family photos** while you are here!

Learn about farm and ranching life and the history of the area:

Western Riding - Saddles - Dressage - Horse Jumping - Farm to Kitchen Skills for Special Needs Community - Therapeutic Riding - Tack - History of the Stables - Homesteading on the Pajarito Plateau - History of the Rodeo - 4-H Club - Boy Scouts Mounted Patrol - and MORE!

Please park in the designated lots to stroll the stables. No smoking on the stables please.



THE LOS ALAMOS SUMMER CONCERT SERIES @ ASHLEY POND
FEATURES

KATY P & THE BUSINESS



BACK TO SCHOOL COSTUME EXTRAVAGANZA
TO HONOR EDUCATORS

AUGUST, FRIDAY THE 13TH 5-10PM

AFTERPARTY @ VFW HALL

OPENING BANDS: ERYN BENT & BONES OF ROMEO

PRESENTED BY:

PRODUCED BY:

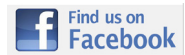
SPONSORED BY:





County Fair & Rodeo Contacts

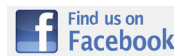
Rodeo, Vendors, Music - Los Alamos County Recreation Division (505) 662-8170



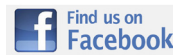
Parade - Los Alamos MainStreet (505) 661-4844



Exhibits - Cooperative Extension Office (505) 662-2656



Arts & Crafts Fair - Fuller Lodge Art Center (505) 662-1635



2021 County Fair & Rodeo SPONSORS



KJM Autobody



Country Farm Supply
mycsupply.com



LEMONADE LIVING
making life sweet!



WINDGATE
HEALING ARTS



Fuller Lodge
Art Center



Los Alamos
Arts Council



LOS ALAMOS
MAINSTREET



Los Alamos

NM
TRUE



LOS ALAMOS
where discoveries are made